

HOUSES

NEW ZEALAND RESIDENTIAL ARCHITECTURE AND DESIGN

ISSUE 23 — \$11.90
AUTUMN 2012



STYLISH Houses & Kitchens

by New Zealand's
leading Architects
and Designers

WIN a \$4200
kitchen prize

ISSN 1177-1739

01



9 1771 1771 173002

PROJECT

06

Hataitai KITCHEN *by John Mills* Architects

• WELLINGTON •

A cool, calm and collected kitchen designed by John Mills.

Photography by [Paul McCredie](#)



John Mills's clients wanted a kitchen that would sit thoughtfully in the Hataitai house he was designing for them. They wanted it to be tidy and elegant, but it did not need to be large. They are a family of four, and felt that a standard sized kitchen would better allow for other living spaces to take the lead role. According to Mills it is designed to be quiet, friendly and very much residential.

The placement of the kitchen in the northwest corner of the living space was to allow for the lounge to get most of the sun and light, and make sure that the kitchen didn't take up the prime real estate. The room is open, so it is still a light space and shares the views past the lounge to Evans Bay and the Miramar Peninsula beyond.

The placement of the oven and rangehood also creates privacy from the neighbours on the north side. The fridge, pantry and storage space are neatly tucked under the stairs. There is an open walk in space to access the fridge and pantry on the west wall.

The material palette used is also in keeping with the house. The island bench has stained dark plywood offset with sections of pale plywood around the base. The cabinets echo the blonded ply of the ceiling panels. A soft, textural grey splashback has been achieved with a pumice and plaster mix. This is used throughout the house.

"The clients wanted the kitchen to quietly speak kitchen and loudly speak lounge," says Mills. The island bench is a distinct move away from the rounded edges, circular shapes and vivid colours that can be seen in many kitchens designed by Mills. This was a response to the clients' desire for the island to look like furniture rather than a kitchen bench.

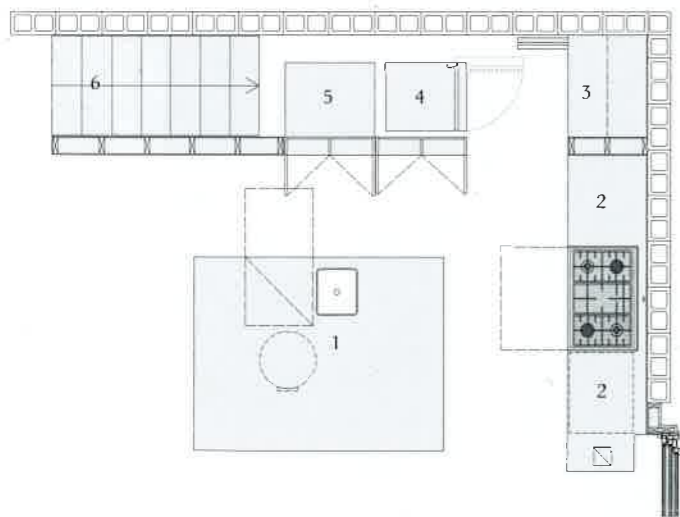
Mills has successfully designed a modest, elegant kitchen for his clients. The materials are neutral without being dull, and the plan is simple and thoughtful. **CE**

01 Looking along the west wall of this kitchen in Hataitai.

02 This modest kitchen is designed to sit discreetly in the open plan lounge.



- 1 Island unit
- 2 Work bench
- 3 Pantry
- 4 Fridge/freezer
- 5 Storage units
- 6 Stairs



Kitchen plan



03 The soft grey of the pumice and plaster splashback is repeated in the TV room and complemented by the family cat.

Architect

John Mills Architects

21 Garrett Street
Wellington
04 385 2255
www.johnmillsarchitects.co.nz

Practice profile

John Mills Architects is a small firm that works on residential, commercial and renovation work.

Project team

James Warren; John Mills

Builder

Redican Allwood

Subcontractors

Your Kitchen, Tony Hawe

Products

Internal walls: Timber; concrete

Paint: Resene

Flooring: Concrete

Cabinetry: Plywood; Mardeco handles

Splashback: Plaster

Benchtop: Stainless steel; plywood

Appliances: DeLonghi stovetop, oven and rangehood; Fisher & Paykel fridge/freezer

Artwork (wire heart): Sandra McLintock

Sink: Burns and Ferrall

Time schedule

Design and Planning: 2-3 weeks

Construction: 4-6 weeks